

WSCF

WEST SIDE COMMUNITY FUND

West Side Community Fund

Spring 2023 Impact Report

Introduction

West Side Community Fund (WSCF) is a consortium of leading businesses and firms that have come together to support neighborhood initiatives in the west side of Manhattan. Through a bi-annual microgrants program, WSCF supports initiatives that deliver services to under-resourced residents in Chelsea, Hudson Yards, and Hell’s Kitchen. Since its founding in 2018, WSCF has distributed more than \$825,000 over six grant cycles.

This report outlines the impact of WSCF’s Fall 2022 grants and highlights a few of the grantees’ initiatives. A full annual report is forthcoming this fall.

Thank you to all of our gracious supporters. Together, we are strengthening the west side community.

Impact: By the Numbers

Impact of Fall 2022 Grantees

\$100,000

in micro-grants distributed

15

initiatives funded

42,411

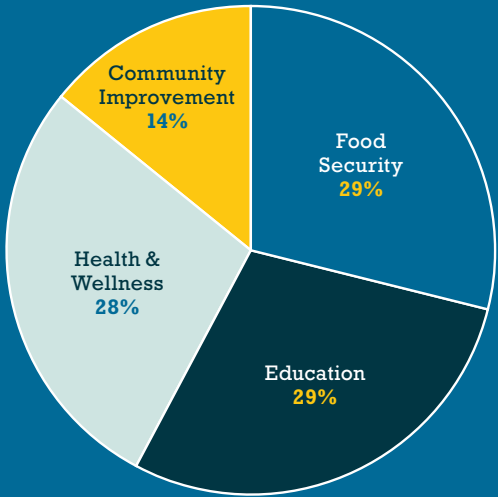
community members served

2,314

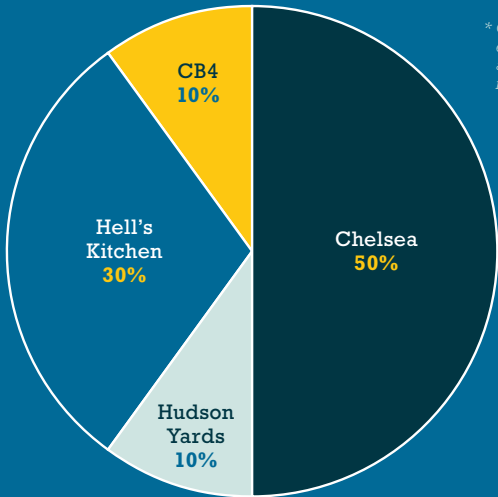
hours of programming provided

1,797

staff members & volunteers supported the initiatives



Initiative Impact Areas



Primary Neighborhoods Served

* CB4 encompasses all three neighborhoods

Impact: Grantee Highlights

Penn South Social Services *Connecting & supporting older adults*

Penn South Program for Seniors (PSPS), the flagship program of Penn South Social Services, provides services designed to allow Penn South seniors to independently stay in their homes. In 2022, PSPS launched Club Connect, a day program for older adults with progressive cognitive impairments and/or dementia. Through activities and programming, Club Connect provides socialization and connections for participants; it also provides respite opportunities for family caregivers.

"Club Connect has been a godsend to my husband, Bill, and myself, and came into our lives at a critical time. Bill, who has middle stage Alzheimer's disease, was no longer able to be left alone at home safely. The socialization, community and activities provided in this program have helped to keep him engaged and happy in a meaningful way. The care and attention he receives from the very committed staff and social workers has been exceptional," said Lisa, whose husband Bill is a Club Connect participant.

With the support of a WSCF grant, Club Connect added music therapy to its programming. Participants have responded well to the weekly music therapy sessions, and PSPS staff shared that for some participants, the music has transported them to a specific time and place in their lives, enabling them to recall memories that they haven't thought about in some time.



Keoni Movement Arts *Expanding access to movement arts*

Keoni Movement Arts (KMA) provides classes and performance opportunities to individuals of all ages, abilities, and means. A majority of class participants have a disability or special need, and/or are economically disenfranchised.

Funding from WSCF supported KMA's Free Community Yoga classes, which are hosted in Hell's Kitchen. KMA offers three class formats: (1) accessible yoga, which utilizes props to better serve participants with disabilities, (2) chair yoga for seniors, and (3) yoga dance flow.

Minta Cantoral, a class participant shared, "yoga at KMA was a wonderful experience for me as a senior citizen and for my daughter, Samanta, who has Down Syndrome and autism. We learned different ways to be present, better ways to ease our tension, and safe ways to exercise. We love the guidance provided by the instructors and the attention we were given. We love the class and hope to continue."



Adaptive Design Association *Empowering students with autism*

Made to Learn (M2L), a program run by Adaptive Design Association (ADA), is designed to teach students how to fabricate adaptive equipment. In partnership with special educators, ADA creates immersive adaptive design classroom experiences in local schools.

Utilizing WSCF grant funds, ADA engaged students with autism at the P138M @ Park West school. Students and staff attended 17 weekly M2L sessions, during which they learned key adaptive design skills, including techniques in cardboard carpentry and collaborative building. The curriculum equips students with pre-vocational skills, STEAM skills, and knowledge on how they can support other people with disabilities by applying the adaptive design skills they've learned. Ultimately, ADA's goal is to enhance the students' chances of graduation, employment, and/or integration into day habilitation programs.

ADA designers Adam El Sawaf and Eric Gottshall provided support and instruction. "There is a broad range of communication and learning styles amongst the students. Some use words, others use hand gestures, or they use picture boards to let us know when they have questions. It's amazing how many pieces of adaptive equipment are produced by the students every time they visit," said Adam. For instance, one of the students, Mohammed, has learned to craft objects that remove barriers for other students, including an adaptive seat.



Announcing our Spring 2023 Grantees

We are excited to announce WSCF's Spring 2023 grant recipients. This cycle, we distributed a total of \$100,000 in grants, supporting [21 worthy initiatives](#) being led by the following organizations:

1. **Alpha Workshops**
2. **Art for Progress**
3. **Art Start**
4. **Cambio Labs**
5. **CHEKPEDS**
6. **Chelsea Community News**
7. **Chelsea Elliott Tenants Association**
8. **Friends of Argentine Tango**
9. **Friends of Chelsea Green**
10. **Housing Conservation Coordinators**
11. **Keoni Movement Arts**
12. **Metropolitan Community Church of New York**
13. **Midtown South Community Council**
14. **New York City Community Chorus**
15. **NYC Salt**
16. **PS11 Friends of Asylum Seekers**
17. **Rauschenbusch Metro Ministries**
18. **S3VEN Inc.**
19. **The Dream Center NYC**
20. **The Dwelling Place of NY**
21. **W42ST**



Thank you to our Supporters

WSCF Board Members

- Joseph Drayton** Cooley LLP
- Carley Graham Garcia** Amazon
- Charles O’Byrne** Related
- Michael Phillips** Jamestown
- Angela Pinsky** Google

Local Electeds

- Jerry Nadler** Congressman
- Brad Hoylman** State Senator
- Tony Simone** Assembly Member
- Erik Bottcher** Council Member
- Mark Levine** Manhattan Borough President

Community Leaders

- Jeffrey LeFrancois** Community Board 4 Chair
- Darlene Waters** Elliott-Chelsea Houses Tenant Association President
- Miguel Acevedo** Fulton Houses Tenant Association President

Thank you to our Donors

These leading corporations are setting an outstanding example of corporate citizenship and we are looking forward to building on their example. Your continued support in 2023 will allow WSCF to support even more high-impact initiatives along the west side.

